

THIS SITE PLAN HAS BEEN  
DESIGNED BASED ON A  
SURVEY MAP OF LANDS OF

**CAROGA ARTS  
COLLECTIVE, INC.**

(INST. NO. 2017-42043)

TOWN OF CAROGA  
COUNTY OF FULTON  
STATE OF NEW YORK

SCALE: 1" = 40' OCTOBER 20, 2020  
JANUARY 15, 2021

LANDS OF  
RICHARD E. & MICHELLE I. MURRAY  
(INST. NO. 2019-55574)  
S.B.L. 68.-1-11

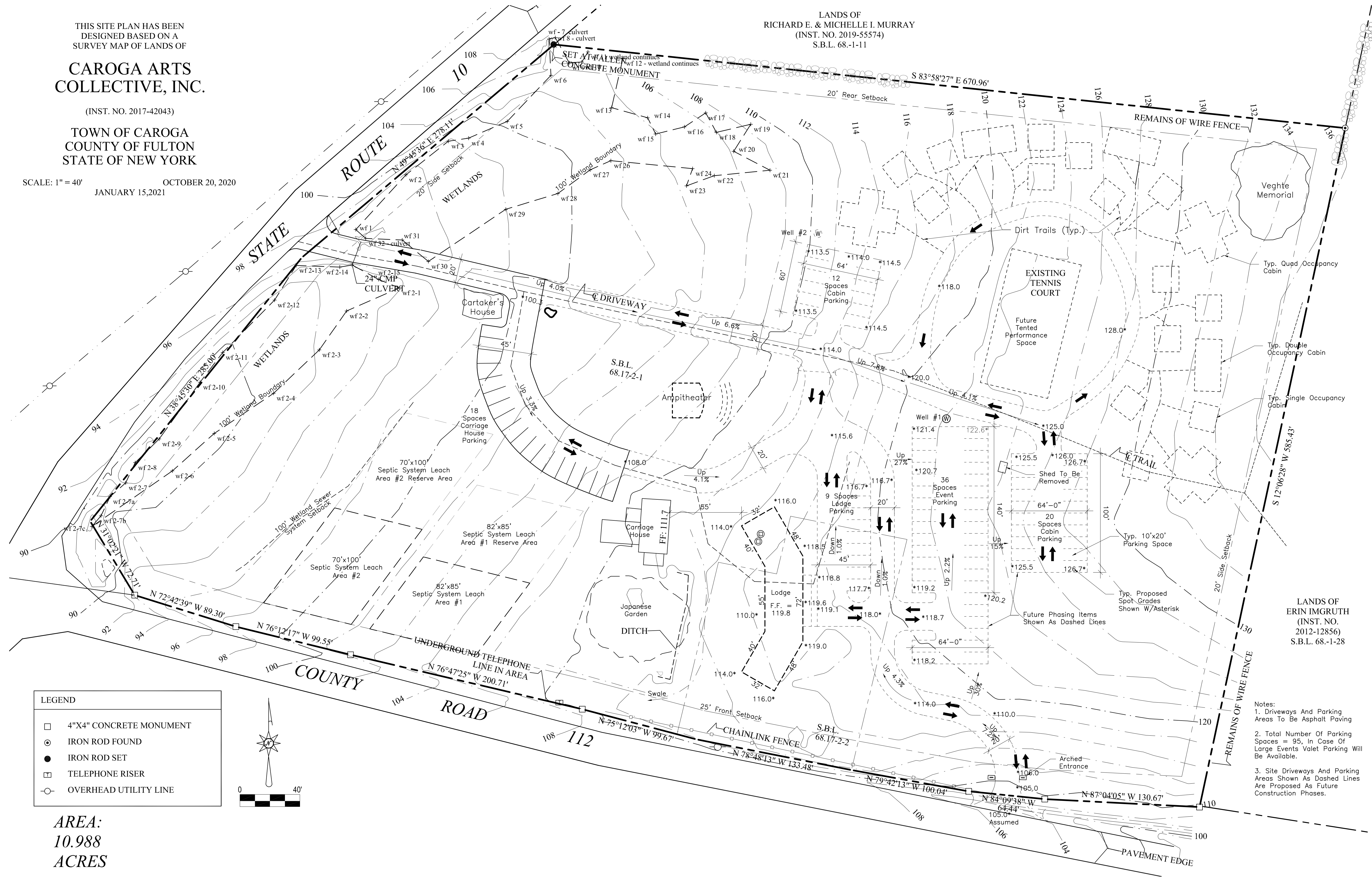
CIVIL & ARCHITECTURAL  
ENGINEERING

**STEVEN E. SMITH, P.E.**

25 WEST FULTON STREET  
GLOVERSVILLE, N.Y. 12078  
(518) 725-1555

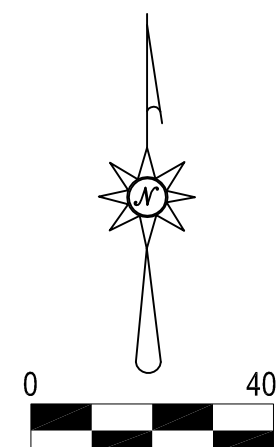
Caroga Arts Collective, Inc.

My Hill Compound



LANDS OF  
ERIN IMGRUTH  
(INST. NO.  
2012-12856)  
S.B.L. 68.-1-28

LEGEND	
	4\"X4\" CONCRETE MONUMENT
	IRON ROD FOUND
	IRON ROD SET
	TELEPHONE RISER
	OVERHEAD UTILITY LINE



AREA:  
10.988  
ACRES

1 Site Plan  
Scale: 1"=40'

- Notes:
1. Driveways And Parking Areas To Be Asphalt Paving
  2. Total Number Of Parking Spaces = 95, In Case Of Large Events Valet Parking Will Be Available.
  3. Site Driveways And Parking Areas Shown As Dashed Lines Are Proposed As Future Construction Phases.

Added Setback Boundaries, Eliminated 36 Parking Spaces, Created Phasing Information Note #5			05/14/21
No.	Description	Revision Schedule	Date
Construction Drawing			MM/DD/YY
Bid Drawing			MM/DD/YY
Drawing Log			

DRAWN BY: Will Miles

Copyright by Steven E. Smith, P.E.  
2021 all rights reserved.

Planning Board Submission  
Date: 05/14/21

SHEET NAME:

Site Plan

PAGE:  
C-101