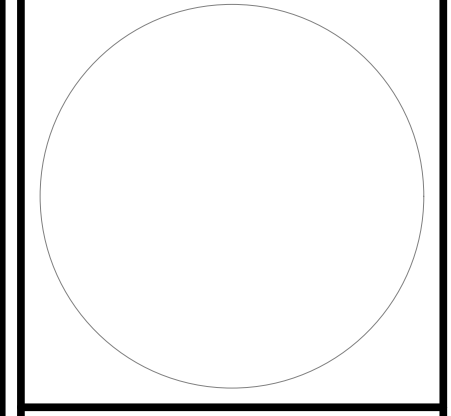


NEW HIGHWAY FACILITY FOR TOWN OF CAROGA

NYS ROUTE 10
 TOWN OF CAROGA
 FULTON COUNTY, NEW YORK

DRAWN BY	NLZ
CHECK BY	JCD
EDP PROJECT NUMBER	13396
<small>THE PREPARATION OF THESE DOCUMENTS IS THE SOLE RESPONSIBILITY OF THE ENGINEER. THE ENGINEER DOES NOT WARRANT THE ACCURACY OF THE INFORMATION PROVIDED BY OTHER PROFESSIONALS. THE ENGINEER IS NOT RESPONSIBLE FOR THE DESIGN OR CONSTRUCTION OF ANY STRUCTURES OR EQUIPMENT. THE ENGINEER IS NOT RESPONSIBLE FOR THE DESIGN OR CONSTRUCTION OF ANY STRUCTURES OR EQUIPMENT. THE ENGINEER IS NOT RESPONSIBLE FOR THE DESIGN OR CONSTRUCTION OF ANY STRUCTURES OR EQUIPMENT.</small>	
REVISION	DATE BY

LICENSE NAME OF PROFESSIONAL
 #####



SCALE:
 1"=30'

NOT FOR CONSTRUCTION

SHEET TITLE:
 ####

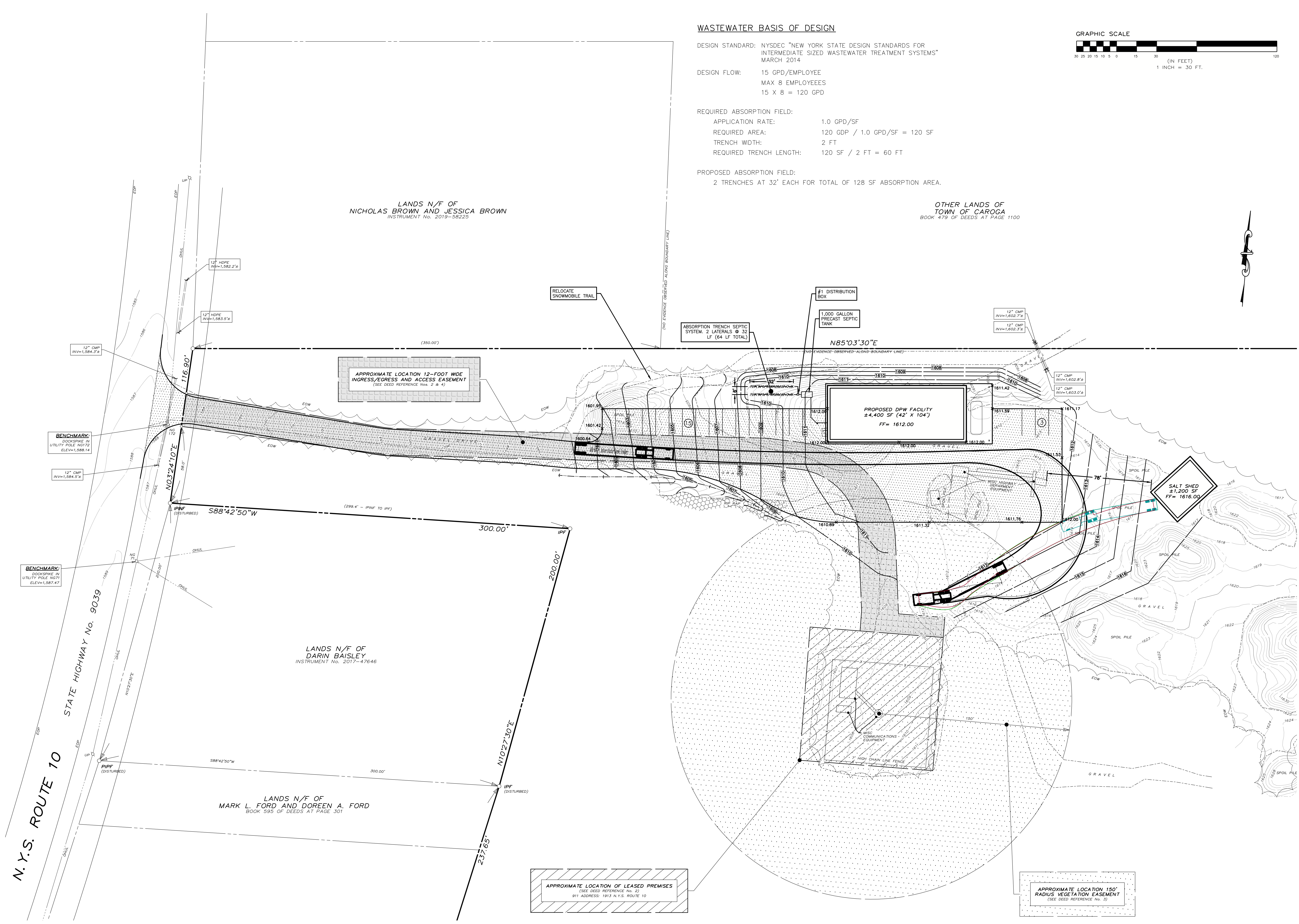
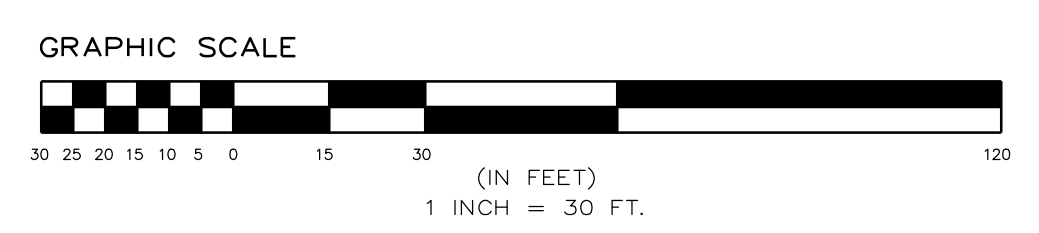
SHEET:
 #### of
 ####

WASTEWATER BASIS OF DESIGN

DESIGN STANDARD: NYSDEC "NEW YORK STATE DESIGN STANDARDS FOR INTERMEDIATE SIZED WASTEWATER TREATMENT SYSTEMS" MARCH 2014
 DESIGN FLOW: 15 GPD/EMPLOYEE
 MAX 8 EMPLOYEEES
 15 X 8 = 120 GPD

REQUIRED ABSORPTION FIELD:
 APPLICATION RATE: 1.0 GPD/SF
 REQUIRED AREA: 120 GPD / 1.0 GPD/SF = 120 SF
 TRENCH WIDTH: 2 FT
 REQUIRED TRENCH LENGTH: 120 SF / 2 FT = 60 FT

PROPOSED ABSORPTION FIELD:
 2 TRENCHES AT 32' EACH FOR TOTAL OF 128 SF ABSORPTION AREA.



0:\FULTON\CAROGA\TOWN\Highway Garage and Salt Storage\ES-dwg\Be-titled Plans\SHEETS\06_CPL\LGAROGA-GBAVL-FIT.dwg, Aug. 09, 2022, 02:55:52PM